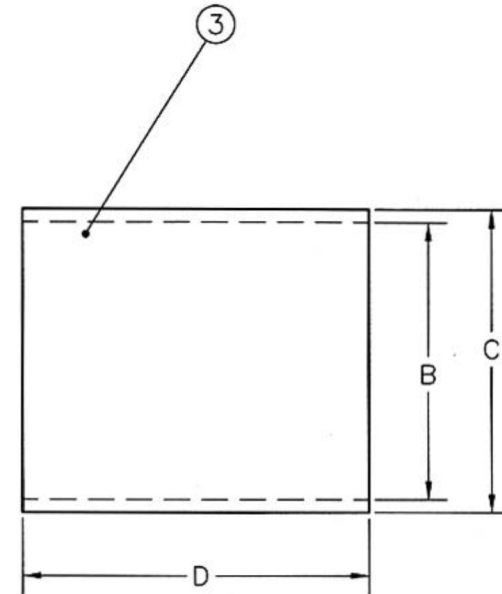
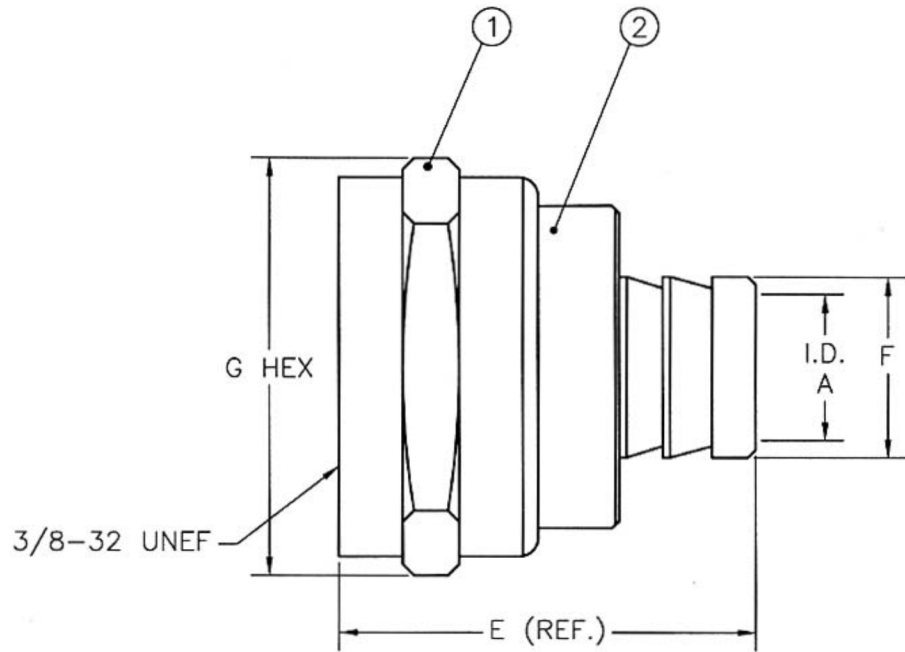



REVISIONS				
ZONE	REV	DESCRIPTION	DATE	APPROVED



**MATERIAL & FINISH**  
 1.NUT: BRASS / NICKEL  
 2.BODY: BRASS / NICKEL  
 3.RING/FERREL: BRASS BRONZE / NICKEL

NOTE: FERREL/RING AVAILABLE SEPERATELY

PART NO.		DIMENSION m/m							CABLE SPECIFICATION
		A	B	C	D	E	F	G	
RFF-7711	F59	4.0	8.0	8.5	14.4	15.7	4.9	11.0	RG59U
RFF-7712	F59	4.0	8.0	8.5	6.4	15.7	4.9	11.0	RG59U
RFF-7713	F59	4.0	8.0	8.5	12.7	15.7	4.9	11.0	RG59U
RFF-7717	F11	7.5 <sup>+0</sup> <sub>-0.1</sub>	12.5	13.5	5.0	19.4	8.5 <sup>+0</sup> <sub>-0.1</sub>	12.7	RG11U
RFF-7751	F56	5.0	8.0	8.5	6.4	15.7	5.9	11.0	RG6U

BY	DATE	 an INFINITI® brand
DRAWN <i>R.M.</i>	11/19/01	
CHK'D T.C.	11/20/01	Title: F Type Male Crimp Connector with 1/4 Inch Crimp Ring- RG11/U Cable
APPRV		
MATERIAL	SEE NOTES	
Part No: 107	UNITS mm	SHEET 1 OF 1
	SCALE NONE	